

Tier 2: example *pages 3-6 of 10*

03

LIVING ROOM CONCEPT



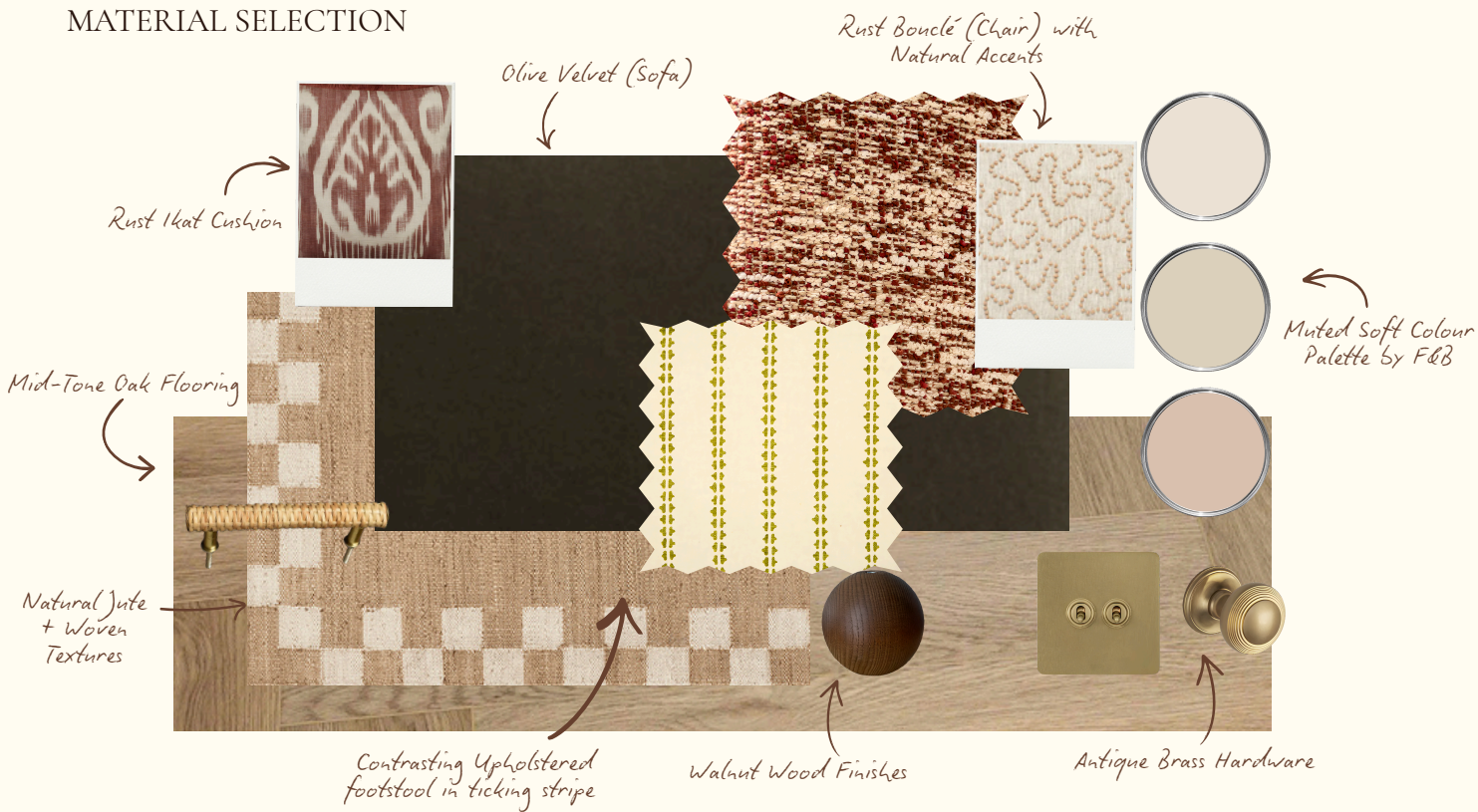
- 1. Accent Chair, Rust Bouclé
- 2. Sofa, Dark Olive Velvet Sofa
- 3. Ottoman, Woven Jacquard Accent
- 4. Rug, Patterned Jute
- 5. Floor Lamp, Brass & Linen Scalloped Shade
- 6. Cushion, Textured Natural Pattern
- 7. Cushion, Deep Red Ikat Pattern with Fringe
- 8. Ceiling pendant, Brass and Dome Natural Linen Shade
- 9. Woodwork, F&B Setting Plaster in Estate Eggshell
- 10. Walls, F&B Joa's White Dead Flat
- 11. Ceiling, Dimity, Dead Flat
- 12. Fabric for Custom Footstool, Natural & Kale Ticking Pattern with Walnut Legs



K

04

MATERIAL SELECTION

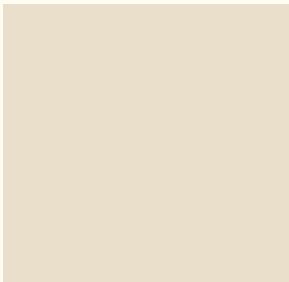


K

05

COLOUR & PAINTS SCHEDULE

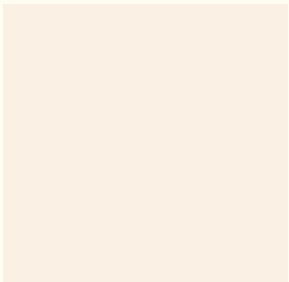
WALLS



Joa's White  
Farrow & Ball, Dead Flat

A timeless, warm taupe. Its rich depth creates a soft and grounded atmosphere that pairs beautifully with natural linen and wood.

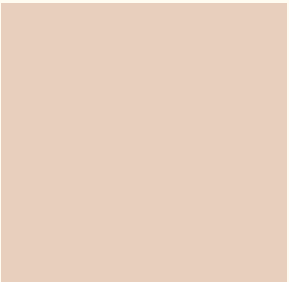
CEILING



Dimity  
Farrow & Ball, Dead Flat

A pale and subdued neutral, adding a gentle warmth that softens the room and enhances the cozy atmosphere.

WOODWORK



Setting Plaster  
Farrow & Ball, Estate Eggshell

A subtle, dusty pink to gently frame the room, picking up on the rust accents to give a cohesive finish.

K

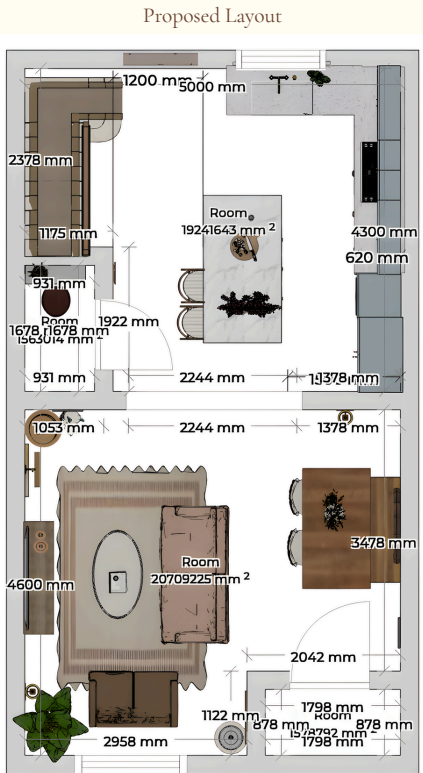
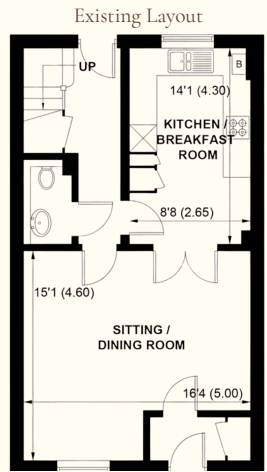
06

SPATIAL PLANNING - OPTION A

The renovation concept focuses on "Dual-Aspect Light & Open Flow," aimed at enhancing natural light by removing internal barriers.

Key features include:

- **Through-Light Effect:** Aligning circulation spaces allows a continuous view from the entrance to the garden, capturing daylight and eliminating dark areas.
- **Grand Entrance Hall:** A new 1922mm wide hallway replaces the cramped corridor, acting as a light funnel and enhancing the sense of arrival.
- **Kitchen & Dining Flow:**
  - Clearance: Functional 1200mm chef's aisle around the island.
  - Integration: Kitchen positioned for garden views while connecting to the front living area.
- **Zoned Living Area:** Defined by furniture instead of walls, with a floating sofa arrangement and a spacious 2244mm rear walkway to maintain an expansive feel.



K